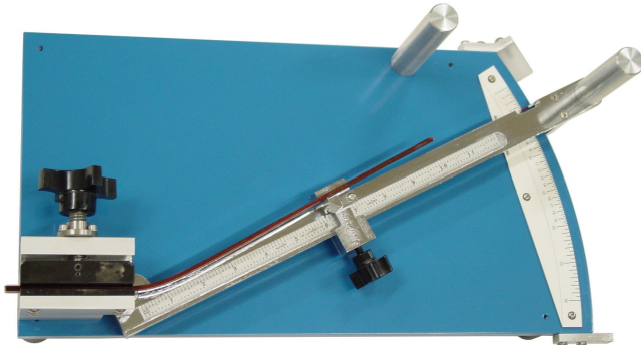


## Nova 520 Rectangular Wire Springback Tester



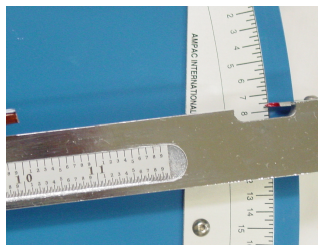
### Features:

- Meets NEMA Specifications
- Degree Resolution  
1/4° from 0° to 20°  
1° from 20° to 30°
- Sturdy Base Plate
- Ball Bearing Shaft Support
- Test Magnet Wire Sizes:  
Round wire: 12 AWG to 5/16"  
(2 mm to 8 mm)  
Rectangular wire: up to 0.312" x 0.75"  
up to 8 mm x 20 mm

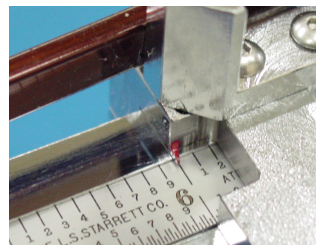
The Nova 520 Rectangular and Large Round Wire Springback Tester perform the springback test according to NEMA, IEC, and JIS specifications. It is a manually operated tester. The lever arm bends a specimen over a 30° angle and then the lever arm is moved away from the wire. The wire will spring back to the relaxed position. The lever arm is moved towards the wire to just contact the wire specimen. The springback angle is then measured. The angular scale is graduated to a resolution of 0.25 (1/4) degrees. The lever arm is graduated in 0.10 (1/10) of an inch and 0.02 (1/50) of an inch.

- Dimension:  
19" W x 11" D x 6" H  
(48 cm W x 28 cm D x 15 cm H)

Springback Scale



Lever Arm Scale



Design and specifications subject to change without prior notification

Ampac International, Inc.  
1118 Cedar Street, Fort Wayne, Indiana 46803  
Tel: 260-424-2964

Designed and manufactured in the USA  
© Copyright 2009 Cat. No. 2009-9

Web-Site: [www.ampac-intl.com](http://www.ampac-intl.com)  
e-mail: [ampac-intl@msn.com](mailto:ampac-intl@msn.com)